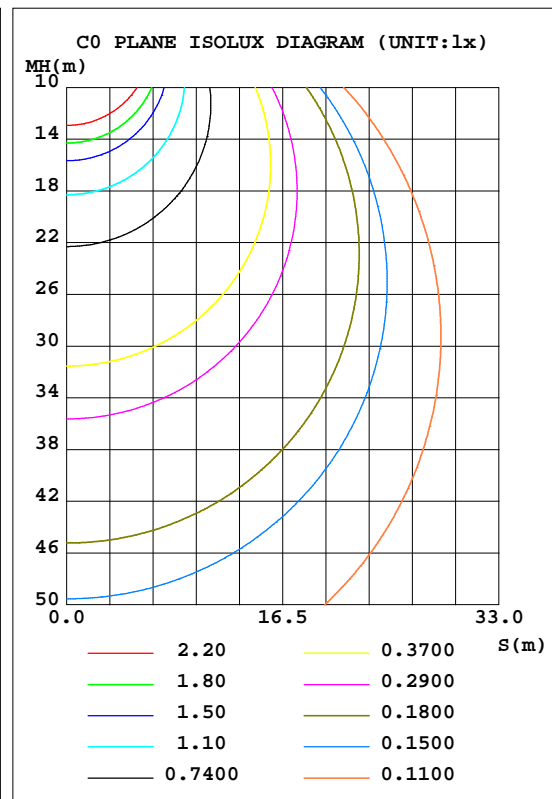
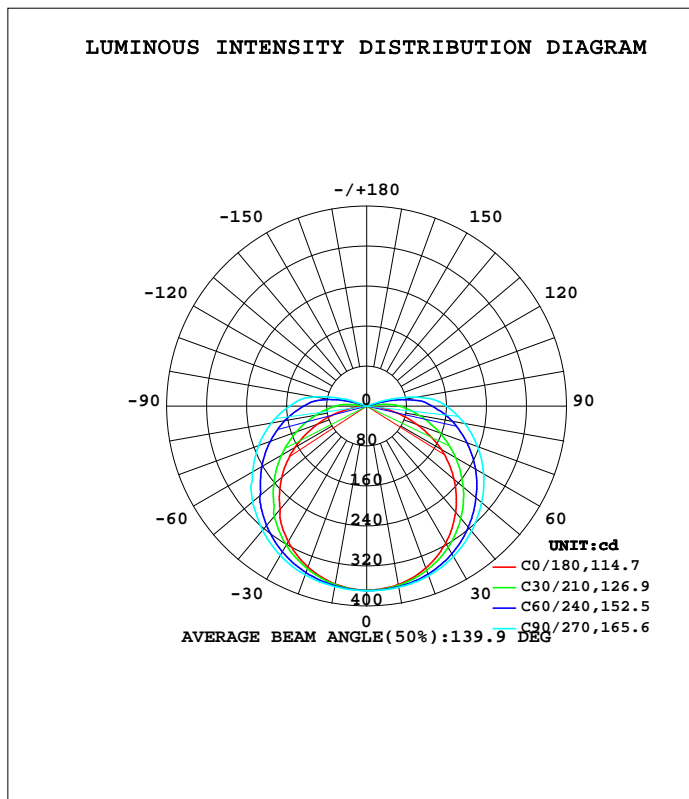


LUMINAIRE PHOTOMETRIC TEST REPORT

Test:U:24.00V I:0.5560A P:13.34W PF:1.000 Freq:50.00Hz Lamp Flux:1529.87x1 lm		
NAME:	TYPE:	WEIGHT:
SPEC.:	DIM.:	SERIAL No.:
MFR.:	SUR.:0.08*1.00mm	Shielding Angle:

DATA OF LAMP		PHOTOMETRIC DATA Eff: 114.66 lm/W			
MODEL	2018 COB	I <sub>max</sub> (cd)	369.6	S/MH(C0/180)	1.27
NOMINAL POWER(W)	13	LOR(%)	100.0	S/MH(C90/270)	1.40
RATED VOLTAGE(V)	24	TOTAL FLUX(lm)	1529.9	η UP, DN(C0-180)	3.5,46.6
NOMINAL FLUX(lm)	1529.87	CIE CLASS	DIRECT	η UP, DN(C180-360)	3.6,46.3
LAMPS INSIDE	1	η up(%)	7.1	CIBSE SHR NOM	1.50
TEST VOLTAGE(V)	24	η down(%)	92.9	CIBSE SHR MAX	1.55



C Range: 0 - 360DEG  
 C Interval: 15.0DEG  
 Test Speed: HIGH  
 Temperature:25DEG  
 Operators:Qin Meng  
 Test Date:2023-10-23

γ Range: 0 - 180DEG  
 γ Interval: 1.0DEG  
 Test System:EVERFINE GO-2000B\_V1 SYSTEM V2.0.362  
 Humidity:65.0%  
 Test Distance:8.540m [K=1.0000]  
 Remarks:

ZONAL FLUX DIAGRAM

ZONAL FLUX DIAGRAM:

$\gamma$	C0	C45	C90	C135	C180	C225	C270	C315	$\gamma$	$\Phi$ zone	$\Phi$ total	%lum,lamp
10	362.5	365.9	368.0	365.3	361.3	363.8	366.7	365.7	0- 10	35.04	35.04	2.29,2.29
20	345.1	354.8	361.4	353.4	343.0	350.7	359.4	354.3	10- 20	101.8	136.8	8.94,8.94
30	316.4	334.7	347.4	333.1	313.6	329.4	345.3	334.6	20- 30	158.5	295.3	19.3,19.3
40	277.1	306.2	326.5	304.7	269.8	300.1	324.2	306.9	30- 40	199.3	494.6	32.3,32.3
50	228.5	266.7	300.4	265.7	221.9	264.1	297.7	272.2	40- 50	219.7	714.4	46.7,46.7
60	171.5	227.5	270.1	227.6	165.6	223.9	263.5	233.3	50- 60	219.2	933.6	61.61
70	106.9	185.9	236.0	187.0	103.7	181.5	229.8	191.9	60- 70	199.6	1133	74.1,74.1
80	43.68	143.3	198.4	145.5	41.07	137.0	193.1	149.3	70- 80	165.0	1298	84.9,84.9
90	2.771	102.4	159.0	105.4	1.493	96.71	154.2	106.5	80- 90	122.8	1421	92.9,92.9
100	0.1387	47.03	103.6	49.32	0.1976	44.16	107.1	56.79	90-100	80.47	1501	98.1,98.1
110	0.1324	0.2023	16.31	0.2507	0.2271	0.3221	27.26	0.7260	100-110	26.47	1528	99.9,99.9
120	0.1324	0.2243	0.2270	0.2338	0.2639	0.2849	0.3077	0.2758	110-120	1.109	1529	99.9,99.9
130	0.1700	0.2482	0.2349	0.2666	0.3034	0.2850	0.2843	0.2682	120-130	0.2215	1529	100,100
140	0.2022	0.2850	0.2528	0.3015	0.3243	0.2850	0.2976	0.2704	130-140	0.2072	1529	100,100
150	0.2561	0.3126	0.2677	0.3277	0.3317	0.3188	0.3249	0.2895	140-150	0.1856	1530	100,100
160	0.3262	0.3321	0.2943	0.3302	0.3331	0.3217	0.3290	0.3187	150-160	0.1465	1530	100,100
170	0.3305	0.3314	0.3184	0.3306	0.3345	0.3246	0.3331	0.3205	160-170	0.0928	1530	100,100
180	0.3309	0.3309	0.3309	0.3309	0.3309	0.3309	0.3401	0.3263	170-180	0.0315	1530	100,100
DEG	LUMINOUS INTENSITY:cd									UNIT:lm		

Conical surface Flux(90deg): 603.27 lm

%lum = 39.4%  
%lamp = 39.4%

Conical surface Flux(120deg): 933.56 lm

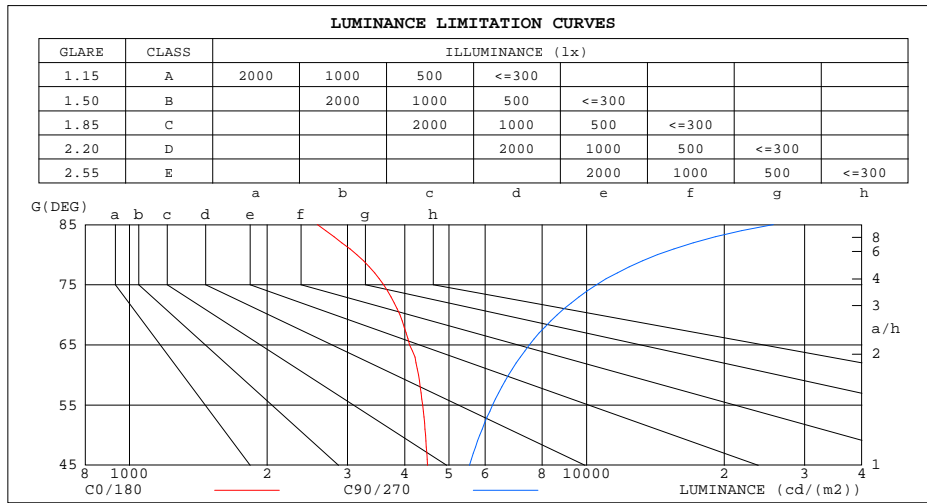
%lum = 61.0%  
%lamp = 61.0%

C Range: 0 - 360DEG  
C Interval: 15.0DEG  
Test Speed: HIGH  
Temperature:25DEG  
Operators:Qin Meng  
Test Date:2023-10-23

$\gamma$  Range: 0 - 180DEG  
 $\gamma$  Interval: 1.0DEG  
Test System:EVERFINE GO-2000B\_V1 SYSTEM V2.0.362  
Humidity:65.0%  
Test Distance:8.540m [K=1.0000]  
Remarks:

LUMINANCE LIMITATION CURVES

Test:U:24.00V I:0.5560A P:13.34W PF:1.000 Freq:50.00Hz Lamp Flux:1529.87x1 lm		
NAME:	TYPE:	WEIGHT:
SPEC.:	DIM.:	SERIAL No.:
MFR.:	SUR.:0.08*1.00mm	Shielding Angle:



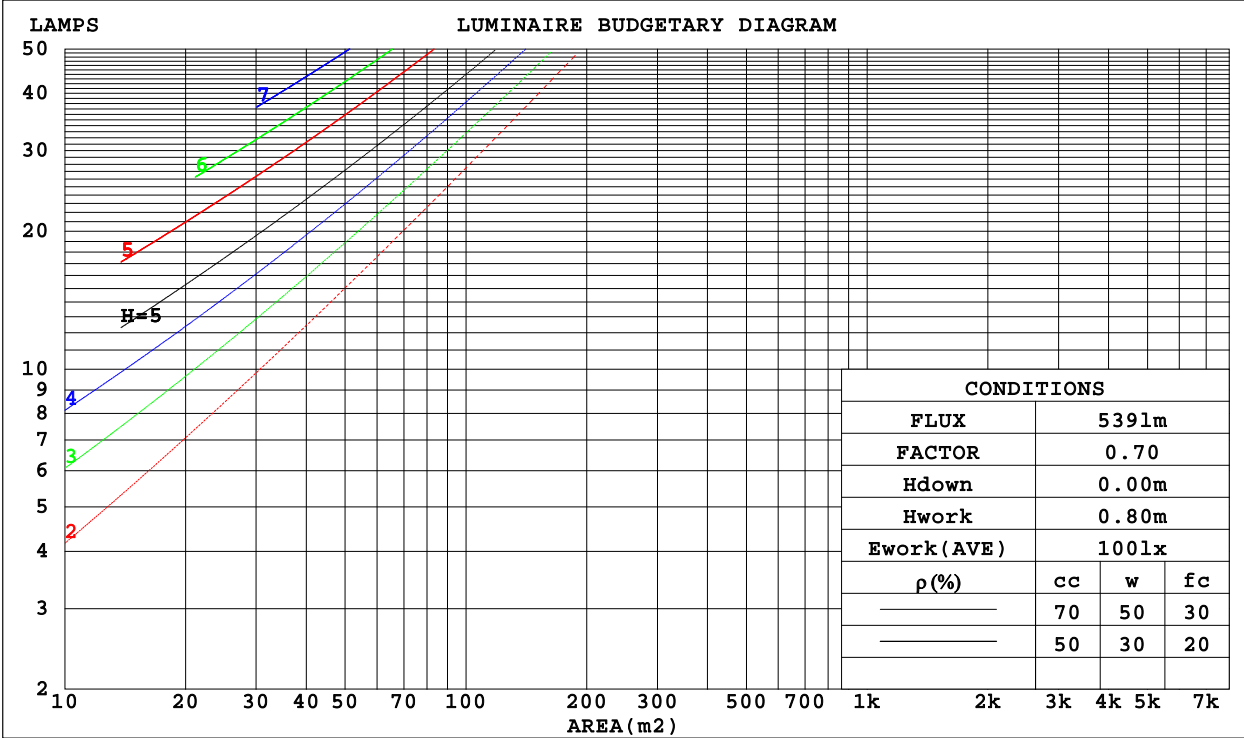
C Range: 0 - 360DEG  
 C Interval: 15.0DEG  
 Test Speed: HIGH  
 Temperature:25DEG  
 Operators:Qin Meng  
 Test Date:2023-10-23

γ Range: 0 - 180DEG  
 γ Interval: 1.0DEG  
 Test System:EVERFINE GO-2000B\_V1 SYSTEM V2.0.362  
 Humidity:65.0%  
 Test Distance:8.540m [K=1.0000]  
 Remarks:

CU AND LUMINAIRE BUDGETARY ESTIMATE DIAGRAM

Test:U:24.00V I:0.5560A P:13.34W PF:1.000 Freq:50.00Hz Lamp Flux:1529.87x1 lm		
NAME:	TYPE:	WEIGHT:
SPEC.:	DIM.:	SERIAL No.:
MFR.:	SUR.:0.08*1.00mm	Shielding Angle:

$\rho_{cc}$	80%			70%			50%			30%			10%			0
$\rho_w$	50%	30%	10%	50%	30%	10%	50%	30%	10%	50%	30%	10%	50%	30%	10%	0
$\rho_{fc}$	20%			20%			20%			20%			20%			0
RCR	RCR:Room Cavity Ratio						Coefficients of Utilization(CU)									
0.0	1.17	1.17	1.17	1.14	1.14	1.14	1.07	1.07	1.07	1.01	1.01	1.01	.96	.96	.96	.93
1.0	.98	.92	.87	.94	.89	.85	.89	.85	.81	.84	.80	.77	.79	.76	.73	.71
2.0	.83	.75	.68	.81	.73	.67	.76	.70	.64	.71	.66	.62	.67	.63	.59	.56
3.0	.72	.63	.55	.70	.61	.54	.66	.58	.52	.62	.56	.51	.58	.53	.49	.46
4.0	.63	.53	.46	.61	.52	.45	.58	.50	.44	.55	.48	.42	.51	.46	.41	.38
5.0	.56	.46	.39	.54	.45	.38	.51	.43	.37	.49	.42	.36	.46	.40	.35	.33
6.0	.50	.41	.34	.49	.40	.33	.46	.38	.32	.44	.37	.31	.42	.35	.31	.28
7.0	.45	.36	.29	.44	.35	.29	.42	.34	.28	.40	.33	.28	.38	.32	.27	.25
8.0	.41	.32	.26	.40	.32	.26	.38	.31	.25	.36	.30	.25	.35	.29	.24	.22
9.0	.38	.29	.23	.37	.29	.23	.35	.28	.22	.33	.27	.22	.32	.26	.21	.19
10.0	.35	.26	.21	.34	.26	.21	.32	.25	.20	.31	.24	.20	.30	.24	.19	.18



C Range: 0 - 360DEG  
 C Interval: 15.0DEG  
 Test Speed: HIGH  
 Temperature:25DEG  
 Operators:Qin Meng  
 Test Date:2023-10-23

$\gamma$  Range: 0 - 180DEG  
 $\gamma$  Interval: 1.0DEG  
 Test System:EVERFINE GO-2000B\_V1 SYSTEM V2.0.362  
 Humidity:65.0%  
 Test Distance:8.540m [K=1.0000]  
 Remarks:

WEC AND CCEC

Test:U:24.00V I:0.5560A P:13.34W PF:1.000 Freq:50.00Hz Lamp Flux:1529.87x1 lm		
NAME:	TYPE:	WEIGHT:
SPEC.:	DIM.:	SERIAL No.:
MFR.:	SUR.:0.08*1.00mm	Shielding Angle:

pcc	80%			70%			50%			30%			10%			0
pw	50%	30%	10%	50%	30%	10%	50%	30%	10%	50%	30%	10%	50%	30%	10%	0
pfc	20%			20%			20%			20%			20%			0
RCR	RCR:Room Cavity Ratio						Wall Exitance Coefficients(WEC)									
0.0																
1.0	.399	.227	.072	.389	.222	.071	.371	.213	.068	.355	.205	.066	.340	.197	.064	
2.0	.345	.189	.058	.336	.185	.057	.321	.178	.055	.306	.172	.054	.292	.165	.052	
3.0	.306	.163	.049	.298	.160	.048	.284	.154	.047	.271	.148	.046	.259	.143	.044	
4.0	.275	.143	.042	.268	.140	.041	.255	.135	.040	.243	.131	.039	.232	.126	.038	
5.0	.250	.127	.037	.243	.125	.036	.232	.121	.036	.221	.117	.035	.211	.113	.034	
6.0	.228	.114	.033	.223	.113	.032	.212	.109	.032	.203	.105	.031	.194	.102	.030	
7.0	.210	.104	.029	.205	.102	.029	.196	.099	.029	.187	.096	.028	.179	.093	.027	
8.0	.195	.095	.027	.190	.094	.026	.182	.091	.026	.174	.088	.025	.166	.085	.025	
9.0	.181	.088	.025	.177	.086	.024	.170	.084	.024	.162	.081	.023	.155	.079	.023	
10.0	.170	.081	.023	.166	.080	.022	.159	.078	.022	.152	.076	.021	.146	.073	.021	

pcc	80%			70%			50%			30%			10%			0
pw	50%	30%	10%	50%	30%	10%	50%	30%	10%	50%	30%	10%	50%	30%	10%	0
pfc	20%			20%			20%			20%			20%			0
RCR	RCR:Room Cavity Ratio						Ceiling Cavity Exitance Coefficients(CCEC)									
0.0	.245	.245	.245	.209	.209	.209	.143	.143	.143	.082	.082	.082	.026	.026	.026	
1.0	.241	.210	.182	.206	.180	.157	.141	.124	.108	.081	.072	.063	.026	.023	.020	
2.0	.234	.187	.147	.201	.161	.127	.138	.111	.088	.079	.065	.052	.025	.021	.017	
3.0	.227	.170	.125	.194	.147	.108	.133	.102	.076	.077	.059	.045	.025	.019	.015	
4.0	.219	.157	.110	.188	.136	.096	.129	.095	.067	.075	.055	.040	.024	.018	.013	
5.0	.211	.147	.100	.181	.127	.087	.125	.089	.062	.072	.052	.036	.023	.017	.012	
6.0	.203	.139	.093	.175	.120	.081	.120	.084	.057	.070	.050	.034	.023	.016	.011	
7.0	.196	.132	.088	.168	.115	.076	.116	.080	.054	.068	.047	.032	.022	.016	.011	
8.0	.189	.127	.084	.163	.110	.073	.113	.077	.052	.065	.045	.031	.021	.015	.010	
9.0	.182	.122	.081	.157	.106	.070	.109	.074	.050	.063	.044	.030	.021	.014	.010	
10.0	.176	.117	.078	.152	.102	.068	.106	.072	.048	.062	.042	.029	.020	.014	.010	

C Range: 0 - 360DEG  
 C Interval: 15.0DEG  
 Test Speed: HIGH  
 Temperature:25DEG  
 Operators:Qin Meng  
 Test Date:2023-10-23

γ Range: 0 - 180DEG  
 γ Interval: 1.0DEG  
 Test System:EVERFINE GO-2000B\_V1 SYSTEM V2.0.362  
 Humidity:65.0%  
 Test Distance:8.540m [K=1.0000]  
 Remarks:

UGR(Unified Glare Rating) Table

Test:U:24.00V I:0.5560A P:13.34W PF:1.000 Freq:50.00Hz Lamp Flux:1529.87x1 lm										
NAME:					TYPE:			WEIGHT:		
SPEC.:					DIM.:			SERIAL No.:		
MFR.:					SUR.:0.08*1.00mm			Shielding Angle:		
ceiling/cavity	0.7	0.7	0.5	0.5	0.3	0.7	0.7	0.5	0.5	0.3
walls	0.5	0.3	0.5	0.3	0.3	0.5	0.3	0.5	0.3	0.3
working plane	0.2	0.2	0.2	0.2	0.2	0.2	0.2	0.2	0.2	0.2
Room dimensions	Viewed crosswise					Viewed endwise				
x = 2H y = 2H	15.8	17.4	16.2	17.7	18.0	17.7	19.2	18.1	19.6	19.9
3H	17.4	18.8	17.8	19.2	19.6	20.4	21.8	20.8	22.2	22.6
4H	18.0	19.4	18.4	19.8	20.2	21.8	23.2	22.3	23.6	24.0
6H	18.5	19.8	18.9	20.2	20.6	23.5	24.8	23.9	25.2	25.6
8H	18.6	19.9	19.1	20.3	20.7	24.3	25.6	24.8	26.0	26.5
12H	18.7	19.9	19.1	20.3	20.8	25.3	26.6	25.8	27.0	27.5
4H 2H	16.9	18.3	17.4	18.7	19.1	18.3	19.7	18.7	20.1	20.5
3H	18.8	20.0	19.3	20.5	20.9	21.2	22.5	21.7	22.9	23.4
4H	19.6	20.7	20.1	21.2	21.7	22.9	24.0	23.4	24.5	25.0
6H	20.3	21.3	20.8	21.8	22.3	24.7	25.7	25.2	26.2	26.8
8H	20.5	21.4	21.0	21.9	22.5	25.7	26.7	26.3	27.2	27.7
12H	20.6	21.5	21.2	22.0	22.6	26.9	27.8	27.4	28.3	28.9
8H 4H	20.7	21.6	21.2	22.1	22.7	23.3	24.2	23.8	24.7	25.3
6H	21.7	22.5	22.2	23.0	23.6	25.4	26.2	26.0	26.8	27.3
8H	22.1	22.8	22.7	23.4	24.0	26.6	27.4	27.2	27.9	28.5
12H	22.4	23.1	23.0	23.7	24.3	28.1	28.7	28.6	29.3	29.9
12H 4H	21.0	21.9	21.5	22.4	23.0	23.3	24.2	23.8	24.7	25.3
6H	22.3	23.0	22.8	23.5	24.1	25.5	26.3	26.1	26.8	27.4
8H	22.9	23.5	23.5	24.1	24.7	26.9	27.5	27.5	28.1	28.7
Variations with the observer position at spacings:										
S = 1.0H	+ 0.1 / - 0.1					+ 0.1 / - 0.1				
1.5H	+ 0.2 / - 0.3					+ 0.2 / - 0.3				
2.0H	+ 0.2 / - 0.4					+ 0.2 / - 0.4				

CIE Pub.117, 1530 lm Total Lamp Luminous Flux Correct (8log(F/F0) = 1.5)

C Range: 0 - 360DEG  
 C Interval: 15.0DEG  
 Test Speed: HIGH  
 Temperature:25DEG  
 Operators:Qin Meng  
 Test Date:2023-10-23

γ Range: 0 - 180DEG  
 γ Interval: 1.0DEG  
 Test System:EVERFINE GO-2000B\_V1 SYSTEM V2.0.362  
 Humidity:65.0%  
 Test Distance:8.540m [K=1.0000]  
 Remarks:

**UTILIZATION FACTORS TABLE**

Test:U:24.00V I:0.5560A P:13.34W PF:1.000 Freq:50.00Hz Lamp Flux:1529.87x1 lm		
NAME:	TYPE:	WEIGHT:
SPEC.:	DIM.:	SERIAL No.:
MFR.:	SUR.:0.08*1.00mm	Shielding Angle:

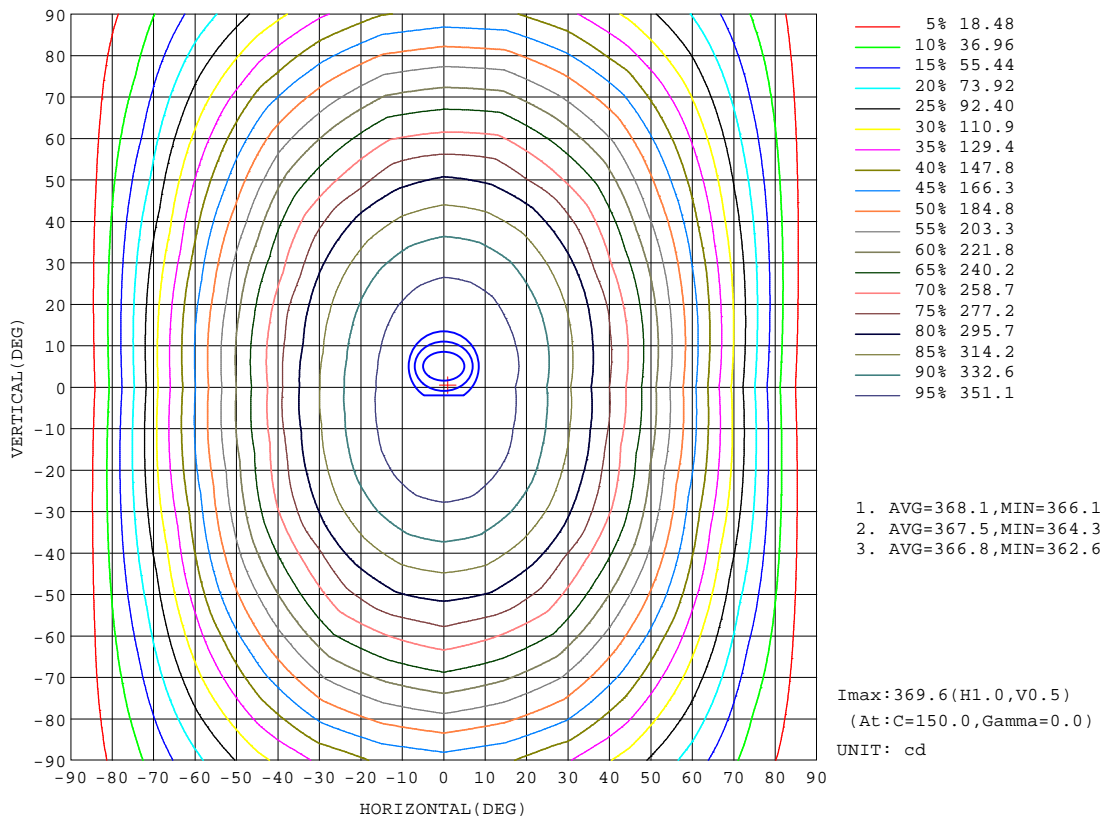
REFLECTANCE										
Ceiling	0.8	0.8	0.8	0.7	0.7	0.7	0.5	0.5	0.5	0
Walls	0.7	0.5	0.3	0.7	0.5	0.3	0.7	0.5	0.3	0
Working plane	0.2	0.2	0.2	0.2	0.2	0.2	0.2	0.2	0.2	0
ROOM INDEX	UTILIZATION FACTORS(PERCENT) k(RI) x RCR = 5									
k = 0.60	50	38	30	49	38	30	48	37	30	23
0.80	60	47	38	58	46	38	56	45	38	30
1.00	67	55	46	66	54	46	63	55	45	37
1.25	74	62	53	73	61	53	69	59	52	43
1.50	79	67	59	77	66	58	74	64	57	48
2.00	87	76	68	84	74	67	80	72	65	55
2.50	91	81	73	89	79	72	84	76	70	60
3.00	95	86	78	92	84	77	87	80	74	64
4.00	100	92	85	97	89	83	91	85	80	69
5.00	103	96	90	99	93	88	94	89	84	73
ROOM INDEX	UF(total)									Direct
According to DIN EN 13032-2 2004			Suspended				SHRNOM = 1.25			

C Range: 0 - 360DEG  
 C Interval: 15.0DEG  
 Test Speed: HIGH  
 Temperature:25DEG  
 Operators:Qin Meng  
 Test Date:2023-10-23

γ Range: 0 - 180DEG  
 γ Interval: 1.0DEG  
 Test System:EVERFINE GO-2000B\_V1 SYSTEM V2.0.362  
 Humidity:65.0%  
 Test Distance:8.540m [K=1.0000]  
 Remarks:

ISOCANDELA DIAGRAM

Test:U:24.00V I:0.5560A P:13.34W PF:1.000 Freq:50.00Hz Lamp Flux:1529.87x1 lm		
NAME:	TYPE:	WEIGHT:
SPEC.:	DIM.:	SERIAL No.:
MFR.:	SUR.:0.08*1.00mm	Shielding Angle:



C Range: 0 - 360DEG  
 C Interval: 15.0DEG  
 Test Speed: HIGH  
 Temperature:25DEG  
 Operators:Qin Meng  
 Test Date:2023-10-23

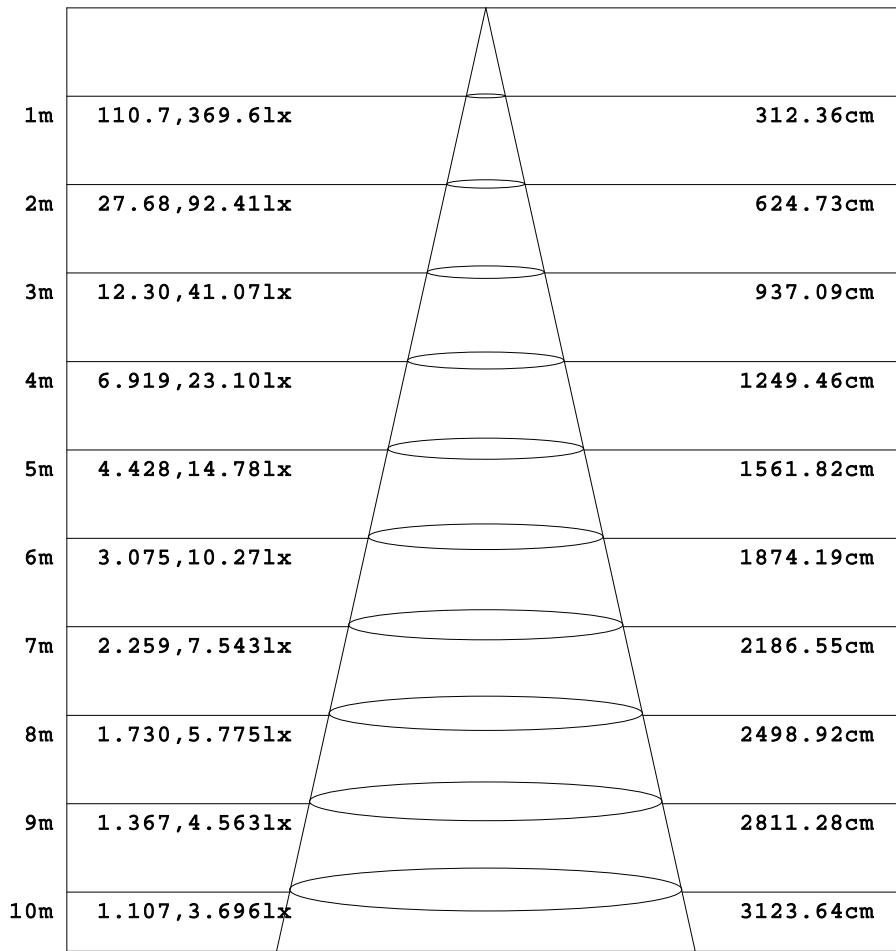
γ Range: 0 - 180DEG  
 γ Interval: 1.0DEG  
 Test System:EVERFINE GO-2000B\_V1 SYSTEM V2.0.362  
 Humidity:65.0%  
 Test Distance:8.540m [K=1.0000]  
 Remarks:



AAI Figure

Test:U:24.00V I:0.5560A P:13.34W PF:1.000 Freq:50.00Hz Lamp Flux:1529.87x1 lm		
NAME:	TYPE:	WEIGHT:
SPEC.:	DIM.:	SERIAL No.:
MFR.:	SUR.:0.08*1.00mm	Shielding Angle:

Flux out:890.7 lm



Height                      Eavg, Emax                      Angle:114.74deg                      Diameter

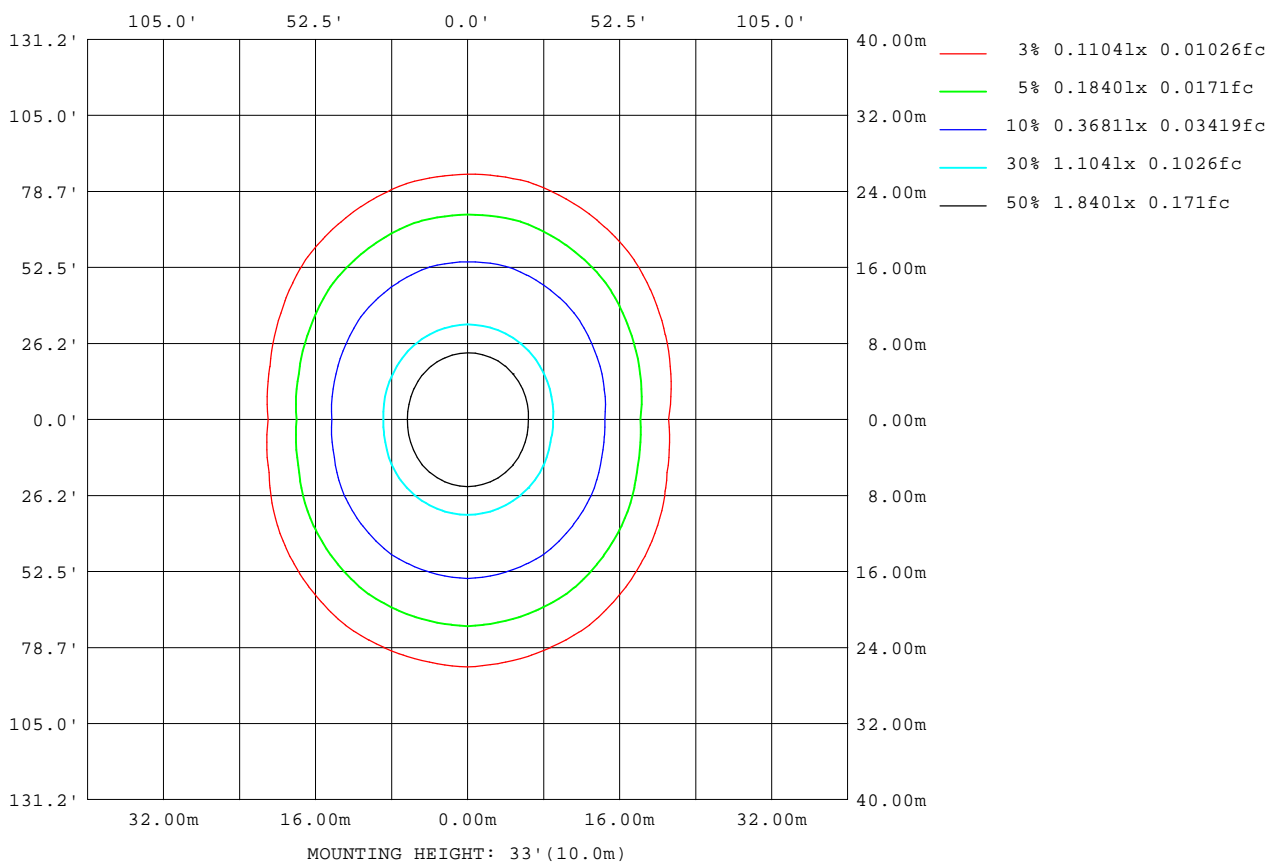
Note:The Curves indicate the illuminated area and the average illumination when the luminaire is at different distance.

C Range: 0 - 360DEG  
 C Interval: 15.0DEG  
 Test Speed: HIGH  
 Temperature:25DEG  
 Operators:Qin Meng  
 Test Date:2023-10-23

γ Range: 0 - 180DEG  
 γ Interval: 1.0DEG  
 Test System:EVERFINE GO-2000B\_V1 SYSTEM V2.0.362  
 Humidity:65.0%  
 Test Distance:8.540m [K=1.0000]  
 Remarks:

ISOLUX DIAGRAM

Test:U:24.00V I:0.5560A P:13.34W PF:1.000 Freq:50.00Hz Lamp Flux:1529.87x1 lm		
NAME:	TYPE:	WEIGHT:
SPEC.:	DIM.:	SERIAL No.:
MFR.:	SUR.:0.08*1.00mm	Shielding Angle:



C Range: 0 - 360DEG  
 C Interval: 15.0DEG  
 Test Speed: HIGH  
 Temperature: 25DEG  
 Operators: Qin Meng  
 Test Date: 2023-10-23

γ Range: 0 - 180DEG  
 γ Interval: 1.0DEG  
 Test System: EVERFINE GO-2000B\_V1 SYSTEM V2.0.362  
 Humidity: 65.0%  
 Test Distance: 8.540m [K=1.0000]  
 Remarks:

**LED Avg.L Report**

Test:U:24.00V I:0.5560A P:13.34W PF:1.000 Freq:50.00Hz Lamp Flux:1529.87x1 lm		
NAME:	TYPE:	WEIGHT:
SPEC.:	DIM.:	SERIAL No.:
MFR.:	SUR.:0.08*1.00mm	Shielding Angle:

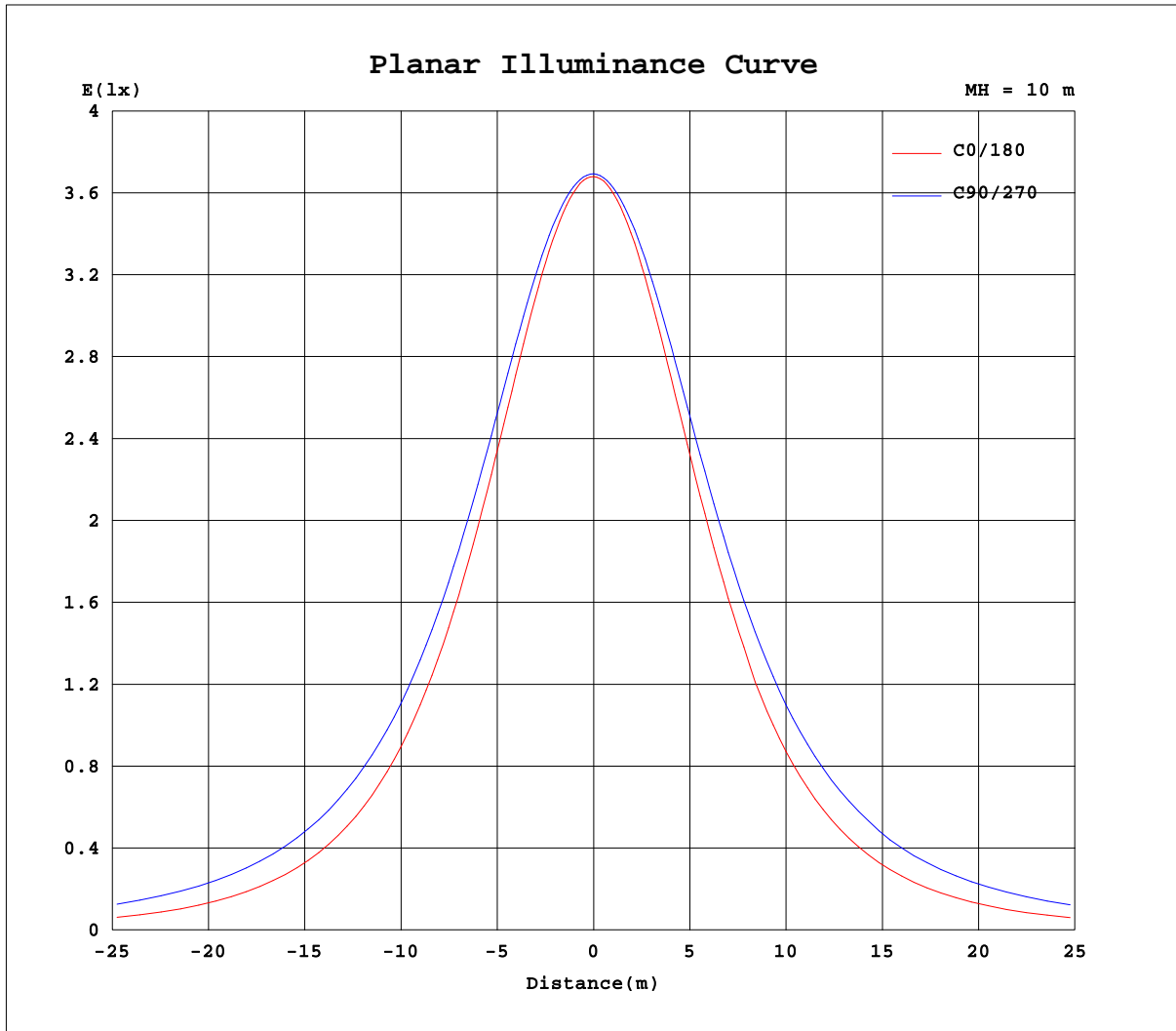
AvgL	cd/m2
L_0~180(65)av	4052
L_0~180(75)av	3532
L_0~180(85)av	2331
L_90~270(65)av	7403
L_90~270(75)av	10370
L_90~270(85)av	25260
L_45(65)av	6142
L_45(75)av	7987
L_45(85)av	17574

Standard: GB/T 29293-2012

C Range: 0 - 360DEG  
 C Interval: 15.0DEG  
 Test Speed: HIGH  
 Temperature:25DEG  
 Operators:Qin Meng  
 Test Date:2023-10-23

γ Range: 0 - 180DEG  
 γ Interval: 1.0DEG  
 Test System:EVERFINE GO-2000B\_V1 SYSTEM V2.0.362  
 Humidity:65.0%  
 Test Distance:8.540m [K=1.0000]  
 Remarks:

Planar Illuminance Curve



C Range: 0 - 360DEG  
 C Interval: 15.0DEG  
 Test Speed: HIGH  
 Temperature: 25DEG  
 Operators: Qin Meng  
 Test Date: 2023-10-23

$\gamma$  Range: 0 - 180DEG  
 $\gamma$  Interval: 1.0DEG  
 Test System: EVERFINE GO-2000B\_V1 SYSTEM V2.0.362  
 Humidity: 65.0%  
 Test Distance: 8.540m [K=1.0000]  
 Remarks:

LUMINOUS DISTRIBUTION INTENSITY DATA

Test:U:24.00V I:0.5560A P:13.34W PF:1.000 Freq:50.00Hz Lamp Flux:1529.87x1 lm		
NAME:	TYPE:	WEIGHT:
SPEC.:	DIM.:	SERIAL No.:
MFR.:	SUR.:0.08*1.00mm	Shielding Angle:

Table--1

UNIT: cd

C(DEG) γ (DEG)	0	15	30	45	60	75	90	105	120	135	150	165	180	195	210	225	240	255	270
0	368	368	369	369	369	369	369	369	370	369	370	370	368	368	369	369	369	369	369
5	367	367	368	369	369	369	369	369	369	368	368	368	366	366	367	367	368	368	369
10	363	363	364	366	367	368	368	368	367	365	364	363	361	362	363	364	365	366	367
15	355	357	358	361	363	365	366	365	363	360	357	355	354	354	356	358	361	363	364
20	345	347	350	355	358	361	361	360	358	353	348	345	343	344	347	351	355	358	359
25	332	335	339	346	351	355	355	354	350	344	337	332	330	331	335	341	347	351	353
30	316	320	326	335	341	346	347	346	340	333	324	316	314	315	322	329	337	342	345
35	298	302	311	321	330	336	338	336	329	320	309	299	295	297	306	316	325	332	336
40	277	283	293	306	317	324	326	324	316	305	291	277	270	277	288	300	312	320	324
45	254	257	274	289	302	311	314	311	301	288	271	253	247	254	264	283	297	306	311
50	228	233	252	267	286	297	300	297	285	266	250	229	222	230	243	264	279	292	298
55	201	208	229	247	269	282	286	282	269	247	228	204	195	204	221	244	260	277	283
60	171	181	205	228	251	262	270	262	252	228	205	178	166	177	197	224	242	260	264
65	139	153	181	207	233	245	254	245	233	208	181	150	135	148	173	203	224	243	247
70	107	123	156	186	213	227	236	228	214	187	157	122	104	118	149	181	205	225	230
75	74.5	94.5	130	165	193	209	218	209	195	166	132	95.0	71.8	89.5	125	160	186	206	212
80	43.7	67.7	107	143	173	190	198	190	175	145	110	69.9	41.1	63.2	102	137	166	187	193
85	18.0	44.6	85.2	122	153	170	179	171	154	125	88.4	48.1	14.5	40.7	80.8	116	146	167	174
90	2.77	26.7	65.4	102	131	151	159	152	133	105	69.2	30.7	1.49	23.7	61.6	96.7	126	146	154
95	0.14	6.24	44.0	82.8	112	132	139	133	114	85.3	47.0	8.79	0.17	2.64	41.0	78.7	109	128	137
100	0.14	0.93	9.26	47.0	76.5	97.6	104	98.3	78.2	49.3	12.0	0.22	0.20	0.21	10.4	44.2	77.4	97.4	107
105	0.14	0.30	0.20	7.85	34.5	54.8	60.6	55.6	36.1	9.79	0.31	0.17	0.21	0.21	0.44	9.82	39.0	58.9	68.4
110	0.13	0.15	0.19	0.20	1.97	11.7	16.3	12.4	2.59	0.25	0.23	0.17	0.23	0.21	0.30	0.32	4.44	18.8	27.3
115	0.13	0.16	0.19	0.22	0.23	0.25	0.40	0.31	0.27	0.23	0.22	0.17	0.25	0.20	0.25	0.28	0.31	0.61	1.35
120	0.13	0.18	0.19	0.22	0.22	0.22	0.23	0.26	0.25	0.23	0.22	0.18	0.26	0.23	0.27	0.28	0.29	0.34	0.31
125	0.15	0.19	0.19	0.24	0.23	0.23	0.23	0.24	0.25	0.24	0.22	0.20	0.28	0.25	0.29	0.28	0.29	0.29	0.29
130	0.17	0.21	0.19	0.25	0.23	0.25	0.23	0.26	0.25	0.27	0.22	0.23	0.30	0.26	0.30	0.28	0.29	0.30	0.28
135	0.18	0.24	0.20	0.27	0.24	0.28	0.24	0.28	0.25	0.29	0.24	0.26	0.32	0.27	0.31	0.28	0.31	0.30	0.29
140	0.20	0.26	0.24	0.28	0.25	0.29	0.25	0.30	0.27	0.30	0.25	0.28	0.32	0.28	0.34	0.28	0.33	0.30	0.30
145	0.24	0.29	0.25	0.30	0.26	0.30	0.26	0.31	0.28	0.33	0.27	0.31	0.33	0.32	0.34	0.32	0.33	0.30	0.32
150	0.26	0.31	0.26	0.31	0.27	0.31	0.27	0.33	0.31	0.33	0.29	0.33	0.33	0.32	0.34	0.32	0.33	0.31	0.32
155	0.27	0.33	0.28	0.33	0.28	0.32	0.28	0.34	0.33	0.33	0.30	0.33	0.33	0.33	0.34	0.32	0.33	0.32	0.33
160	0.33	0.33	0.30	0.33	0.29	0.33	0.29	0.34	0.33	0.33	0.32	0.33	0.33	0.33	0.34	0.32	0.33	0.32	0.33
165	0.33	0.33	0.32	0.33	0.32	0.34	0.31	0.34	0.33	0.33	0.32	0.33	0.33	0.33	0.34	0.32	0.33	0.33	0.33
170	0.33	0.33	0.32	0.33	0.32	0.34	0.32	0.34	0.33	0.33	0.32	0.33	0.33	0.33	0.34	0.32	0.33	0.33	0.33
175	0.33	0.33	0.32	0.33	0.33	0.34	0.32	0.34	0.33	0.33	0.33	0.34	0.34	0.34	0.34	0.33	0.33	0.33	0.34
180	0.33	0.34	0.33	0.33	0.33	0.34	0.33	0.34	0.33	0.33	0.33	0.34	0.33	0.34	0.34	0.33	0.34	0.32	0.34

C Range: 0 - 360DEG  
 C Interval: 15.0DEG  
 Test Speed: HIGH  
 Temperature:25DEG  
 Operators:Qin Meng  
 Test Date:2023-10-23

γ Range: 0 - 180DEG  
 γ Interval: 1.0DEG  
 Test System:EVERFINE GO-2000B\_V1 SYSTEM V2.0.362  
 Humidity:65.0%  
 Test Distance:8.540m [K=1.0000]  
 Remarks:

LUMINOUS DISTRIBUTION INTENSITY DATA

Test:U:24.00V I:0.5560A P:13.34W PF:1.000 Freq:50.00Hz Lamp Flux:1529.87x1 lm		
NAME:	TYPE:	WEIGHT:
SPEC.:	DIM.:	SERIAL No.:
MFR.:	SUR.:0.08*1.00mm	Shielding Angle:

Table--2 UNIT: cd

C( DEG) γ (DEG)	285	300	315	330	345														
0	369	370	369	370	370														
5	369	369	369	369	369														
10	367	367	366	365	365														
15	364	363	361	360	358														
20	359	358	354	351	349														
25	353	350	346	341	337														
30	344	341	335	328	322														
35	334	330	322	313	305														
40	323	317	307	296	285														
45	309	303	290	273	264														
50	295	287	272	253	240														
55	280	266	253	231	215														
60	264	249	233	208	188														
65	247	231	213	184	160														
70	229	213	192	161	130														
75	211	193	171	138	102														
80	191	174	149	115	76.1														
85	171	153	127	92.8	53.0														
90	151	134	106	72.8	34.3														
95	132	116	88.8	54.3	15.3														
100	102	85.6	56.8	22.5	0.70														
105	63.1	47.5	19.9	0.75	0.31														
110	22.4	9.88	0.73	0.31	0.20														
115	0.87	0.47	0.35	0.26	0.20														
120	0.36	0.31	0.28	0.24	0.20														
125	0.29	0.30	0.27	0.25	0.20														
130	0.28	0.29	0.27	0.26	0.22														
135	0.28	0.29	0.27	0.28	0.24														
140	0.28	0.31	0.27	0.30	0.26														
145	0.29	0.32	0.28	0.31	0.27														
150	0.30	0.34	0.29	0.33	0.29														
155	0.30	0.34	0.32	0.33	0.32														
160	0.31	0.34	0.32	0.33	0.32														
165	0.32	0.34	0.32	0.33	0.32														
170	0.32	0.34	0.32	0.33	0.33														
175	0.32	0.34	0.32	0.33	0.33														
180	0.33	0.34	0.33	0.33	0.34														

C Range: 0 - 360DEG  
 C Interval: 15.0DEG  
 Test Speed: HIGH  
 Temperature:25DEG  
 Operators:Qin Meng  
 Test Date:2023-10-23

γ Range: 0 - 180DEG  
 γ Interval: 1.0DEG  
 Test System:EVERFINE GO-2000B\_V1 SYSTEM V2.0.362  
 Humidity:65.0%  
 Test Distance:8.540m [K=1.0000]  
 Remarks: